

ARROTOLATORI AUTOMATICI

serie professionale

Automatic hose reels

professional

Avvolgitubo adatti per la distribuzione di aria compressa ad uso professionale.

The automatic hose reels are suitable to distribute air for professional use.



art. ACM-1/5 / ACM-2/3



art. ACM-3/10



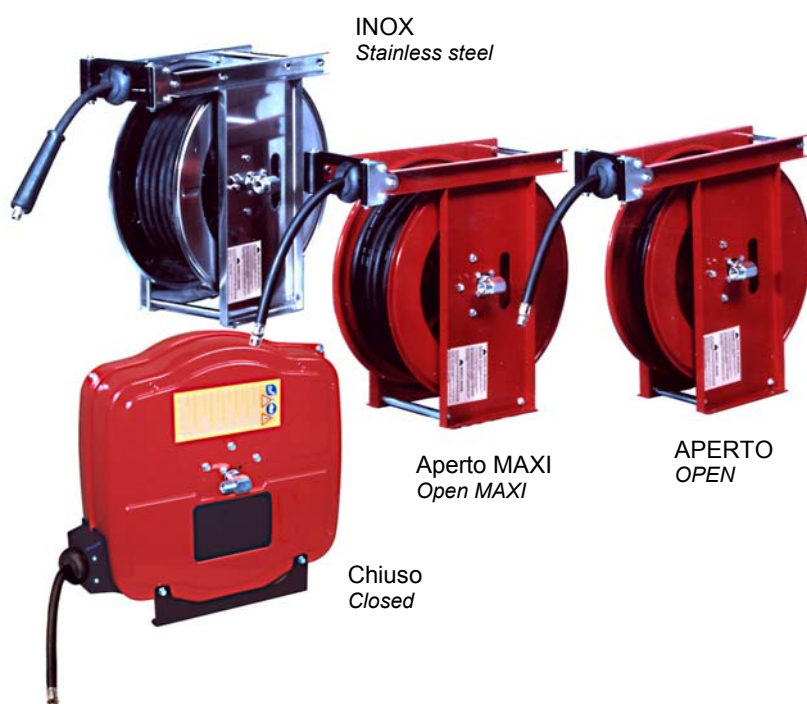
art. ACM-3/12 / ACM-2/10

Modello ACM (chiuso) con tubo – Model ACM (closed) with hose

art.	Entrata GAS Inlet BSP	Uscita GAS Outlet BSP	Diam. tubo Hose diam.	Lungh. tubo (m) Hose length (m)	Max pres. (bar)	Impiego Use
ACM-1/5	Φ 8	1/4" M	8 x 11	5	20	Aria – air
ACM-2/3	Φ 10	3/8" M	10 x 14	3	20	Aria – air
ACM-2/10	3/8" F	3/8" M	10 x 14	10	20	Aria – air
ACM-3/10	3/8" F	1/4" M	8 x 12	10	20	Aria – air
ACM-3/12	3/8" F	1/4" M	8 x 12	12	20	Aria – air

ARROTOLATORI AUTOMATICI

Automatic hose reels



Realizzati con un sistema a tamburo, sono utilissimi per un rapido arrotolamento di tubi flessibili di vario genere: per olio, acqua calda, grasso, etc...

Per la loro praticità ed adattamento, possono essere impiegati in vari settori quali:

AUTOFFICINE, AUTOLAVAGGI,
CANTIERI, OFFICINE MECCANICHE,
ALLEVAMENTI, etc...

A richiesta, può essere fornito il tubo flessibile di collegamento all'impianto.

Developed with a drum system, they are very useful for the quick rolling-up of differential flexible hoses: oil and hot water pipes, grease hoses, etc...

Thanks to their handiness and adaptability, they can be used in different fields, such as:
WORKSHOP, CAR – WASHES, BUILDING,
YARDS, MECHANIC WORKSHOP, BREEDING,
FARMS, etc...

MODELLI senza tubo (predisp. a richiesta)
MODELS without hose (arrangement at request)

Tipo - type	Aria o acqua – 18 bar Air or water – 18 bar	Olio o acqua – 60 bar Oil or water – 60 bar	Grasso – 400 bar Grease – 400 bar	Acqua 150°C – 400 bar Water 150°C – 400 bar	Acqua 80°C – 10 bar Water 80°C – 10 bar
Chiuso – Closed	AC18	AC60	AC400G	AC400	---
Aperto – Open	A18	A60	A400G	A400	---
Aperto MAXI Open MAXI	AS18	AS60	AS400G	AS400	---
Inox – Stainless steel	---	---	---	AX400	AX10
Inox MAXI Stainless steel MAXI	---	---	---	ASX400	ASX10

Modello AC (chiuso) con tubo – Model AC (closed) with hose

art.	Entrata GAS Inlet BSP	Diam. tubo Hose diam.	Lungh. tubo (m) Hose length (m)	Max pres. (bar)	Impiego Use
AC-1/10	3/8" F	5/16" R6 – 8x14	10	18	Aria o acqua – air or water
AC-1/15	3/8" F	5/16" R6 – 8x14	15	18	Aria o acqua – air or water
AC-1/20	3/8" F	5/16" R6 – 8x14	20	18	Aria o acqua – air or water
AC-2/10	3/8" F	3/8" R6 – 10x17	10	18	Aria o acqua – air or water
AC-2/15	3/8" F	3/8" R6 – 10x17	15	18	Aria o acqua – air or water
AC-3/10	1/2" M	1/2" R6 – 13x20	10	18	Aria o acqua – air or water
AC-4/10	3/8" F	3/8" R1	10	60	Olio o acqua – oil or water
AC-4/15	3/8" F	3/8" R1	15	60	Olio o acqua – oil or water
AC-5/10	1/2" M	1/2" R1	10	60	Olio o acqua – oil or water
AC-6/10	1/4" F	1/4" R2	10	400	Grasso – Grease
AC-6/15	1/4" F	1/4" R2	15	400	Grasso – Grease
AC-7/10	3/8" F	3/8" R2	10	400	Acqua 150 °C – water 150°C
AC-8/10	3/8" F	5/16" R2	10	400	Acqua 150 °C – water 150°C
AC-8/15	3/8" F	5/16" R2	15	400	Acqua 150 °C – water 150°C

Modello A (aperto) con tubo – Model A (open) with hose

art.	Entrata GAS Inlet BSP	Diam. tubo Hose diam.	Lungh. tubo (m) Hose length (m)	Max pres. (bar)	Impiego Use
A-1/10	3/8" F	5/16" R6 – 8x14	10	18	Aria o acqua – air or water
A-1/15	3/8" F	5/16" R6 – 8x14	15	18	Aria o acqua – air or water
A-1/20	3/8" F	5/16" R6 – 8x14	20	18	Aria o acqua – air or water
A-2/10	3/8" F	3/8" R6 – 10x17	10	18	Aria o acqua – air or water
A-2/15	3/8" F	3/8" R6 – 10x17	15	18	Aria o acqua – air or water
A-2/20	3/8" F	3/8" R6 – 10x17	20	18	Aria o acqua – air or water
A-3/10	1/2" M	1/2" R6 – 13x20	10	18	Aria o acqua – air or water
A-3/15	1/2" M	1/2" R6 – 13x20	15	18	Aria o acqua – air or water
A-4/10	3/8" F	3/8" R1	10	60	Olio o acqua – oil or water
A-4/15	3/8" F	3/8" R1	15	60	Olio o acqua – oil or water
A-5/10	1/2" M	1/2" R1	10	60	Olio o acqua – oil or water
A-5/15	1/2" M	1/2" R1	15	60	Olio o acqua – oil or water
A-6/10	1/4" F	1/4" R2	10	400	Grasso – grease
A-6/15	1/4" F	1/4" R2	15	400	Grasso – grease
A-7/10	3/8" F	3/8" R2	10	400	Acqua 150 °C – water 150°C
A-7/15	3/8" F	3/8" R2	15	400	Acqua 150 °C – water 150°C
A-8/10	3/8" F	5/16" R2	10	400	Acqua 150 °C – water 150°C
A-8/15	3/8" F	5/16" R2	15	400	Acqua 150 °C – water 150°C


Modello AS (aperto MAXI) con tubo – Model AS (open MAXI) with hose

art.	Entrata GAS Inlet BSP	Diam. tubo Hose diam.	Lungh. tubo (m) Hose length (m)	Max pres. (bar)	Impiego Use
AS-1/25	3/8" F	5/16" R6 – 8x14	25	18	Aria o acqua – air or water
AS-2/20	3/8" F	3/8" R6 – 10x17	20	18	Aria o acqua – air or water
AS-2/25	3/8" F	3/8" R6 – 10x17	25	18	Aria o acqua – air or water
AS-3/15	1/2" M	1/2" R6 – 13x20	15	18	Aria o acqua – air or water
AS-3/20	1/2" M	1/2" R6 – 13x20	20	18	Aria o acqua – air or water
AS-4/10	1/2" M	5/8" R6 – 16X23	10	18	Aria o acqua – air or water
AS-4/14	1/2" M	5/8" R6 – 16X23	14	18	Aria o acqua – air or water
AS-5/20	3/8" F	3/8" R1	20	60	Olio o acqua – oil or water
AS-6/20	1/2" M	1/2" R1	20	60	Olio o acqua – oil or water
AS-7/20	1/4" F	1/4" R2	20	400	Grasso – grease
AS-8/20	3/8" F	3/8" R2	20	400	Acqua 150 °C – water 150°C
AS-9/20	3/8" F	5/16" R2	20	400	Acqua 150 °C – water 150°C

Modello AX - ASX (INOX) con tubo – Model AX - ASX (stainless steel) with hose

art.	Entrata GAS Inlet BSP	Diam. tubo Hose diam.	Lungh. tubo (m) Hose length (m)	Max pres. (bar)	Impiego Use
AX-1/10	3/8" F	3/8" R2	10	400	Acqua 150 °C – water 150°C
AX-1/15	3/8" F	3/8" R2	15	400	Acqua 150 °C – water 150°C
AX-2/10	3/8" F	5/16" R2	10	400	Acqua 150 °C – water 150°C
AX-2/15	3/8" F	5/16" R2	15	400	Acqua 150 °C – water 150°C
AX-3/10	1/2" M	13x21	10	10	Acqua 80 °C – water 80°C
AX-3/15	1/2" M	13x21	15	10	Acqua 80 °C – water 80°C
AX-4/10	1/2" M	16x24	10	10	Acqua 80 °C – water 80°C
ASX-1/20	3/8" F	3/8" R2	20	400	Acqua 150 °C – water 150°C
ASX-2/20	3/8" F	5/16" R2	20	400	Acqua 150 °C – water 150°C
ASX-3/20	1/2" M	13x21	20	10	Acqua 80 °C – water 80°C
ASX-4/15	1/2" M	16x24	15	10	Acqua 80 °C – water 80°C


Modello chiuso ACX (INOX) con tubo – Closed model ACX (stainl. steel) with hose

	art.	Entrata GAS Inlet BSP	Diam. tubo Hose diam.	Lungh. tubo (m) Hose length (m)	Max pres. (bar)	Impiego Use
	ACX-1/10	1/2" M	13x21	10	10	Acqua 80 °C – water 80°C
	ACX-2/10	3/8" F	3/8" R2	10	400	Acqua 150 °C – water 150°C
	ACX-3/10	3/8" F	5/16" R2	10	400	Acqua 150 °C – water 150°C
	ACX-3/15	3/8" F	5/16" R2	15	400	Acqua 150 °C – water 150°C

ACCESSORI

Accessories

Supporti girevoli – Revolving stands

	art.	DESCRIZIONE - DESCRIPTION
	SG-AC	per mod. AC - for AC mod.
	SG-A	per mod. A - for A mod.
	SG-AS	per mod. AS - for AS mod.
	SG-AX	per mod. AX - for AX mod.
	SG-ASX	per mod. ASX - for ASX mod.
	SG-ACX	per mod. ACX - for ACX mod.
	SG-AG	per mod. AG - for AG mod.
SG-AGX	per mod. AGX - for AGX mod.	

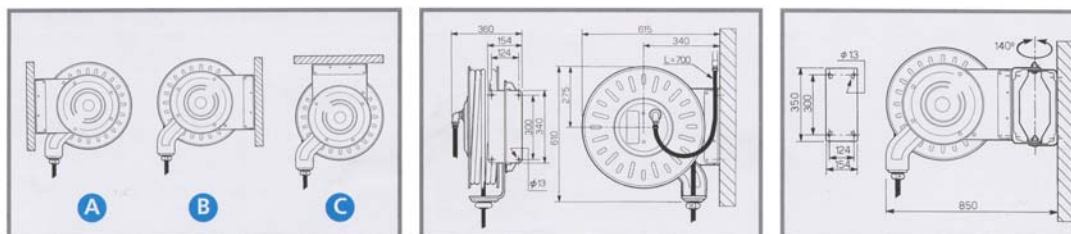
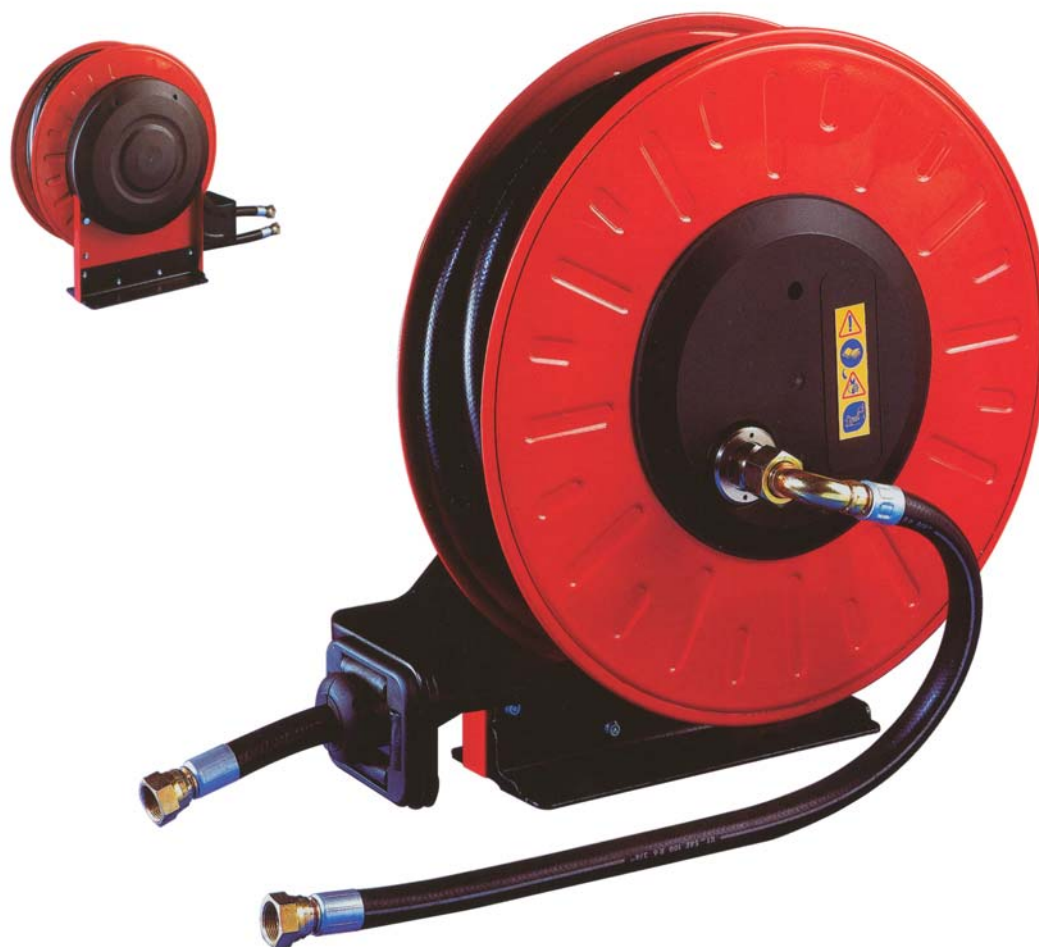


art. MRG
Mensola raccogli gocce
Drip tray



art. PH95
Pistola per acqua 95°C - 1/2F
Chrome-plated brass spray gun
for water 95°C – 1/2" BSP F

Modello AG con tubo – Model AG with hose

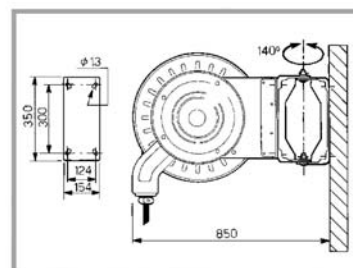
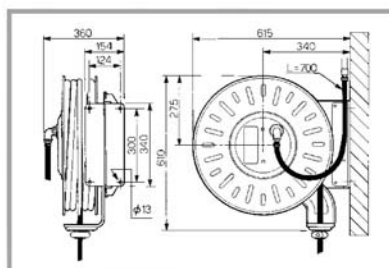
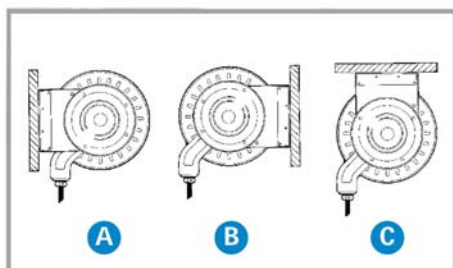


art.	Entrata – Uscita GAS Inlet – Outlet BSP	Diam. tubo Hose diam.	Lungh. tubo (m) Hose length (m)	Max pres. (bar)	Impiego Use
AG-1/25	1/2" F - 1/2" M	13 x 20	25	18	Aria o acqua – air or water
AG-1/30	1/2" F - 1/2" M	13 x 20	30	18	Aria o acqua – air or water
AG-2/25	1/2" F - 1/2" M	16 x 23	25	18	Aria o acqua – air or water
AG-3/20	3/4" F - 3/4" F	19 x 27	20	18	Aria o acqua – air or water
AG-4/15	1" F - 1" F	25 x 34	15	18	Aria o acqua – air or water
AG-5/25	1/2" F - 1/2" F	1/2"	25	60	Olio o acqua – oil or water
AG-5/30	1/2" F - 1/2" F	1/2"	30	60	Olio o acqua – oil or water
AG-6/25	1/2" F - 1/2" F	5/8"	25	60	Olio o acqua – oil or water
AG-7/20	3/4" F - 3/4" F	3/4"	20	60	Olio o acqua – oil or water
AG-8/15	1" F - 1" F	1"	15	60	Olio o acqua – oil or water
AG-9/25	3/8" F - 3/8" F	3/8"	25	400	Grasso – grease
AG-9/30	3/8" F - 3/8" F	3/8"	30	400	Grasso – grease
AG-10/25	3/8" F - 3/8" F	3/8"	25	400	Acqua 150 °C – water 150°C
AG-10/30	3/8" F - 3/8" F	3/8"	30	400	Acqua 150 °C – water 150°C
AG-11/25	1/2" F - 1/2" F	1/2"	25	300	Acqua 150 °C – water 150°C
AG-11/30	1/2" F - 1/2" F	1/2"	30	300	Acqua 150 °C – water 150°C

Modello AGX (INOX) con tubo – Model AGX (stainless steel) with hose



Spring side
Lato molla



art.	Entrata – Uscita GAS Inlet – Outlet BSP	Diam. tubo Hose diam.	Lungh. tubo (m) Hose length (m)	Max pres. (bar)	Impiego Use
AGX-1/25	1/2" F - 1/2" M	13 x 20	25	10	Acqua 80 °C – water 80°C
AGX-1/30	1/2" F - 1/2" M	13 x 20	30	10	Acqua 80 °C – water 80°C
AGX-2/25	1/2" F - 1/2" M	16 x 23	25	10	Acqua 80 °C – water 80°C
AGX-3/20	3/4" F - 3/4" F	19 x 27	20	10	Acqua 80 °C – water 80°C
AGX-4/15	1" F - 1" F	25 x 34	15	10	Acqua 80 °C – water 80°C
AGX-6/25	3/8" F - 3/8" F	3/8"	25	400	Acqua 150 °C – water 150°C
AGX-6/30	3/8" F - 3/8" F	3/8"	30	400	Acqua 150 °C – water 150°C
AGX-7/25	1/2" F - 1/2" F	1/2"	25	300	Acqua 150 °C – water 150°C
AGX-7/30	1/2" F - 1/2" F	1/2"	30	300	Acqua 150 °C – water 150°C



LANZONI AUTOATTREZZATURE di Lanzoni & Poli snc

Via al Palazzo, 10

42030 Vezzano sul Crostolo (RE) – ITALY

phone 0039 (0)522 606311

fax 0039 (0)522 601456

e-mail : lanzoni@lanzonionline.com

web site : <http://www.lanzonionline.com>